

Elektrozylinder Baugröße 2 COMPACT Typ: T6C2-DC

Electric Actuator Size 2 COMPACT Type: T6C2-DC

Vérin Electrique Taille 2 COMPACT Taille: T6C2-DC

Cilindro Eléctrico Tamaño 2 COMPACT Tipo: T6C2-DC



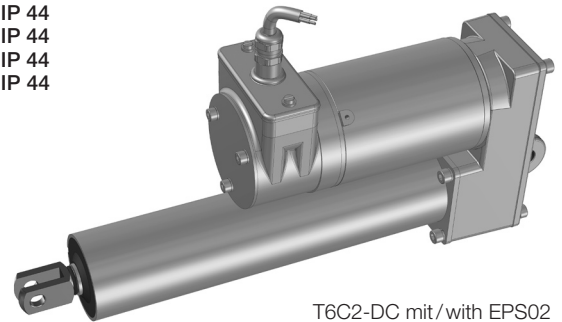
Befestigung: Gabelkopf / Auge **Motor:** 24 V DC, IP 40 / IP 44
Mounting: Front clevis / Rear eye **Drive:** 24 V DC, IP 40 / IP 44
Fixation: Chape d'attelage / Rotule **Motorisation:** 24 V DC, IP 40 / IP 44
Fijación: Horquilla / Ojo atrás **Motor:** 24 V DC, IP 40 / IP 44

T6C2-DC: RACO Motor zum Anbau von Sensorik-Komponenten Typ EPS

T6C2-DC: RACO Motor for adaption of Sensor components type EPS

T6C2-DC: RACO Moteur pour adaption de capteurs type EPS

T6C2-DC: RACO Motor a la colocación de componentes sensoric tipo EPS

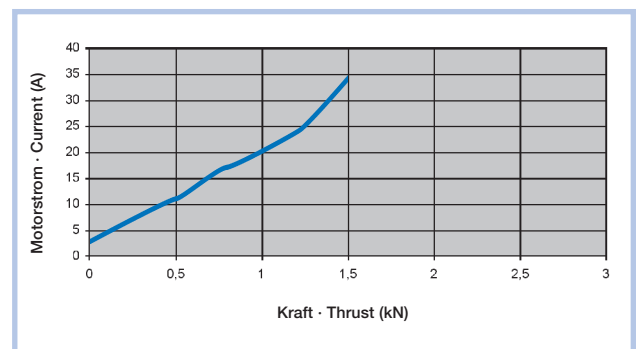
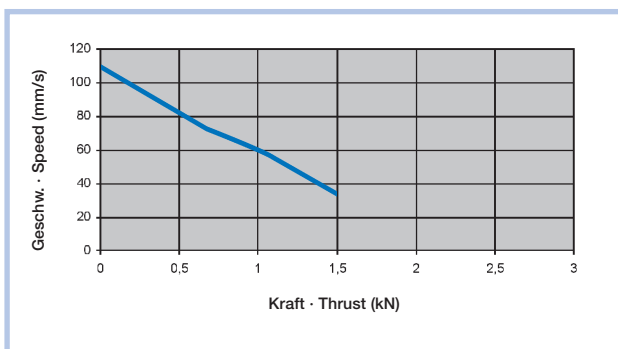
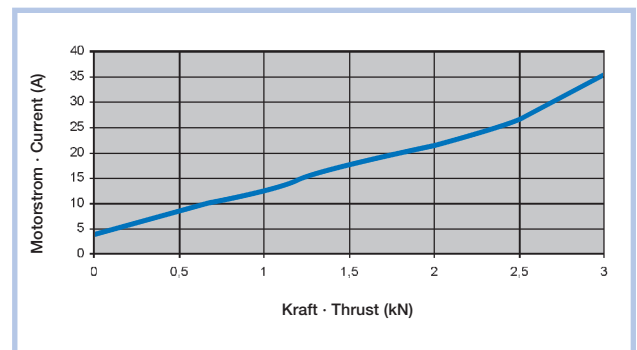
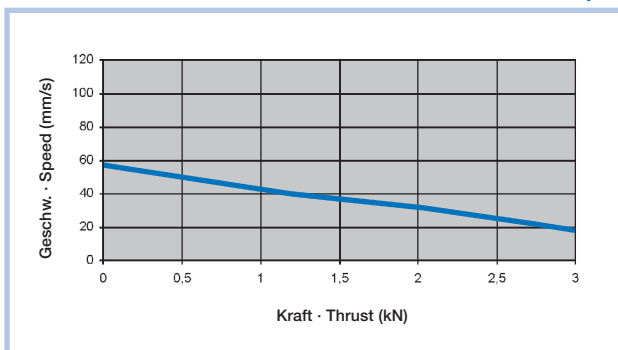


T6C2-DC mit/with EPS02

Technische Daten · Technical Data · Données Techniques · Datos Técnicos

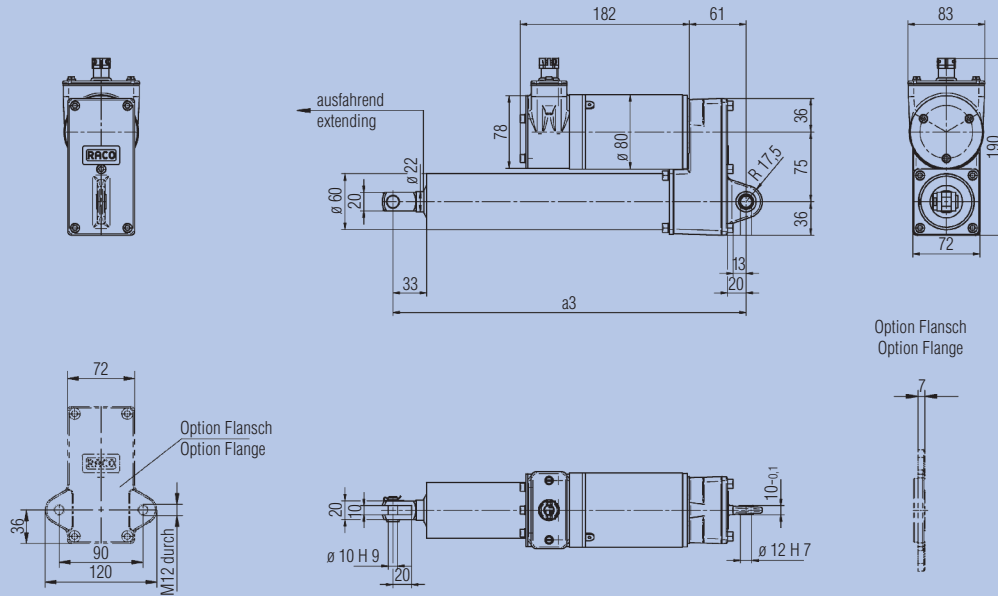
Kraft Thrust	Geschwindigkeit Speed	Hub Stroke	Nennstrom Current	Gewicht Weight	Bestell-Nr. Order No.
Force Esfuerzo	Vitesse Velocidad	Course Carrera	Courant Corriente	Poids Peso	Ref. Commande Ref. Pedido
kN	mm/s	mm	A	kg	T6C2-DC
1,0	60	100	20,0	4,0	T6C2-DC-0101
		200	20,0	4,5	T6C2-DC-0102
		300	20,0	5,0	T6C2-DC-0103
		400	20,0	5,5	T6C2-DC-0104
2,0	30	100	20,0	4,0	T6C2-DC-0105
		200	20,0	4,5	T6C2-DC-0106
		300	20,0	5,0	T6C2-DC-0107
		400	20,0	5,5	T6C2-DC-0108

Kennlinien · Characteristic lines · Caractéristiques du moteur · Características de motor

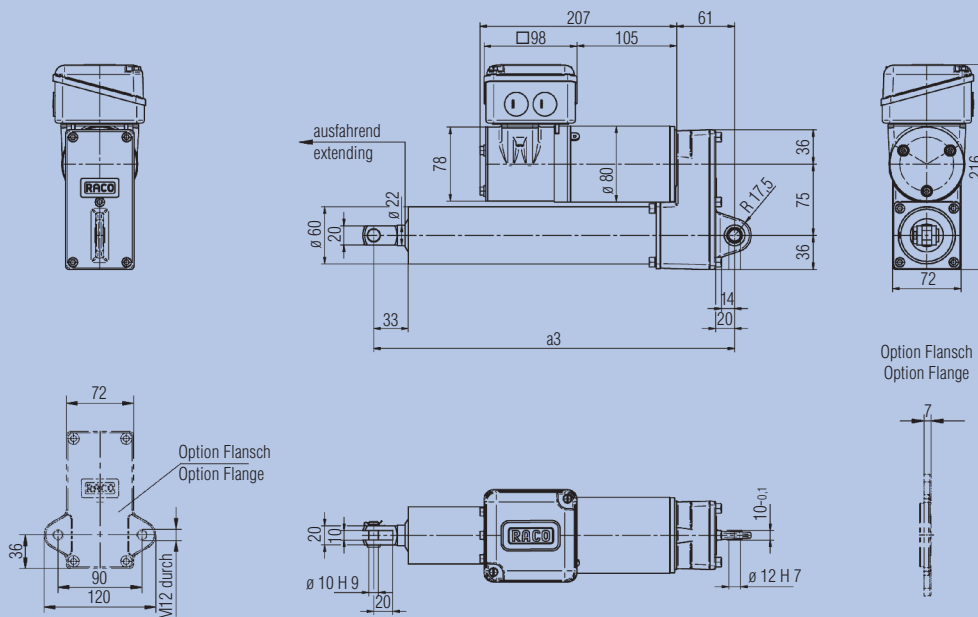


Projektiierungshinweis: Bei Nachlauf Hubreserven entsprechend Blatt 3.5.1 berücksichtigen.
Remark for project planning: Regarding coasting please consider info sheet 3.5.1.
Remarque sur la planification du project: Pour la distance d'arrêt de la tige après la mise hors tension du vérin, se référer page 3.5.1.
Indicación para proyectar: Tener en cuenta la velocidad de inercia con respecto a la carrera, según las instrucciones de servicio 3.5.1.

RACO COMPACT T6C2-DC EPS02 Maßblatt · Dimension Sheet · Dimensions · Dimensiones



RACO COMPACT T6C2-DC EPS06 Maßblatt · Dimension Sheet · Dimensions · Dimensiones



Hub Stroke	Course Carrera	mm	100	200	300	400
Maß a3 Dimension a3	Dimension a3 Dimensión a3	mm	280	380	480	580

Technische Änderungen vorbehalten.
Changes and technical improvements reserved.
Sous réserve de modifications techniques.
Reservadas modificaciones técnicas.



RACO-Elektro-Maschinen GmbH
Jesinghauser Str. 56-64
58332 Schwelm/Germany
Tel.: (+49) (2336) 40 09-0
Fax.: (+49) (2336) 40 09 10
e-Mail: RACO@raco.de
Internet: www.raco.de